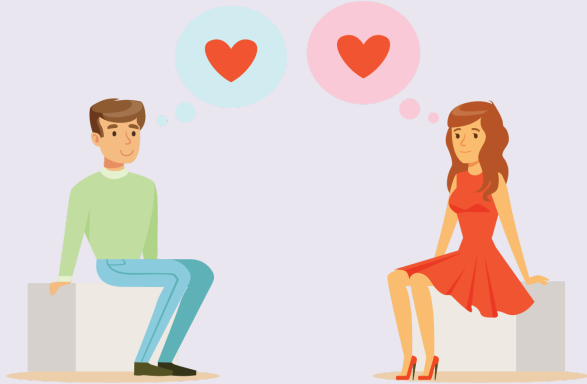


Relationships, Part Four: Romantic Relationships

Romantic relationships are between two people who feel strongly attracted to each other, and are not family.



People in romantic relationships share very personal information with each other, and provide support to each other.



Both people have to agree to be in a romantic relationship.



Being in a romantic relationship with someone is sometimes called 'dating'.



People who are in romantic relationships will sometimes hug, hold hands, kiss or have other kinds of physical, sexual contact.



Romantic relationships can happen between a man and woman, two women, or two men.



This campaign promotes the idea of body autonomy for individuals with disabilities. ASERT has partnered with researchers at the National Crime Victims Research and Treatment Center at the Medical University of South Carolina to develop resources for the Be Safe campaign.

The Autism Services, Education, Resources and Training (ASERT) Collaborative is a statewide initiative funded by the Bureau of Autism Services, PA Department of Human Services.